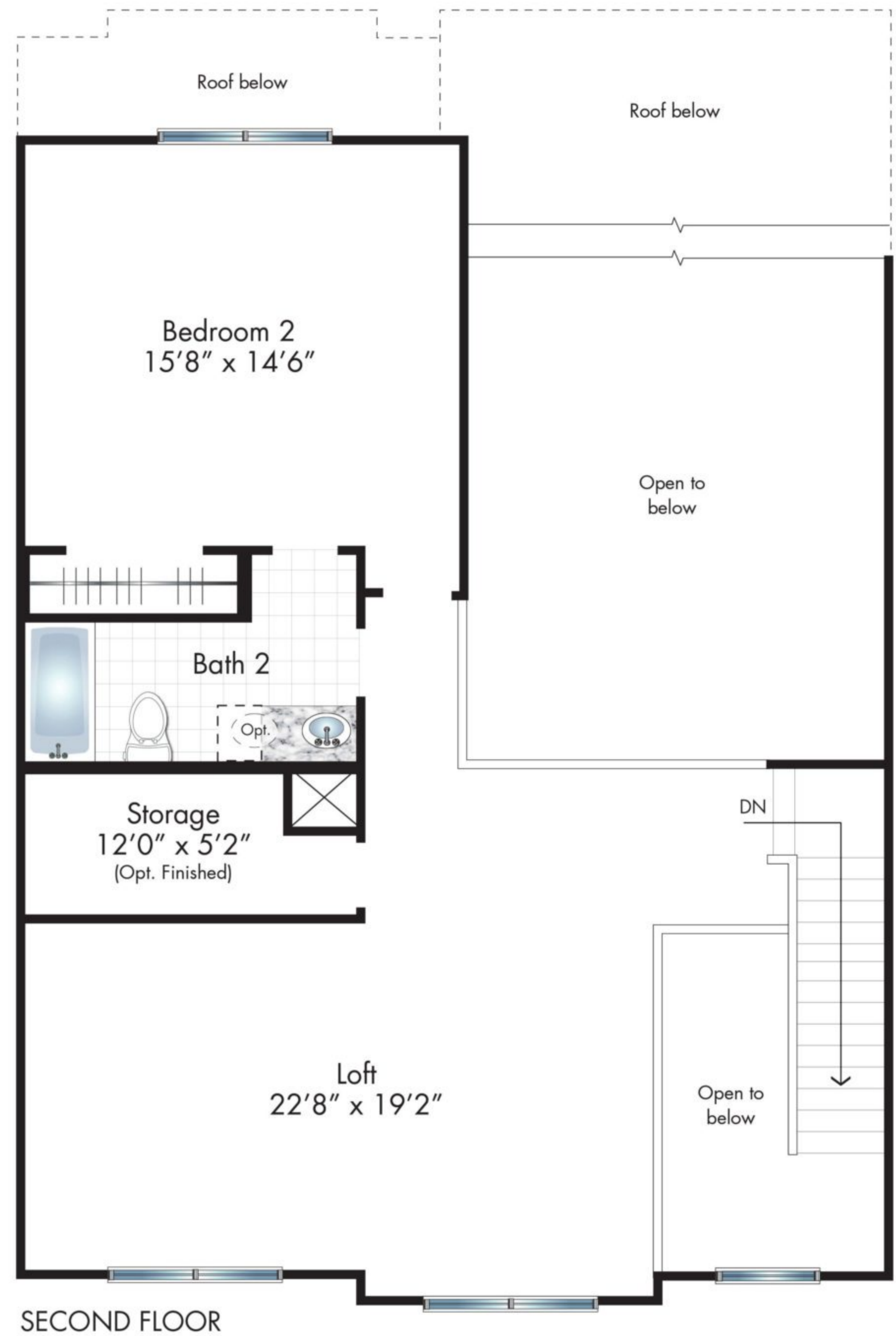
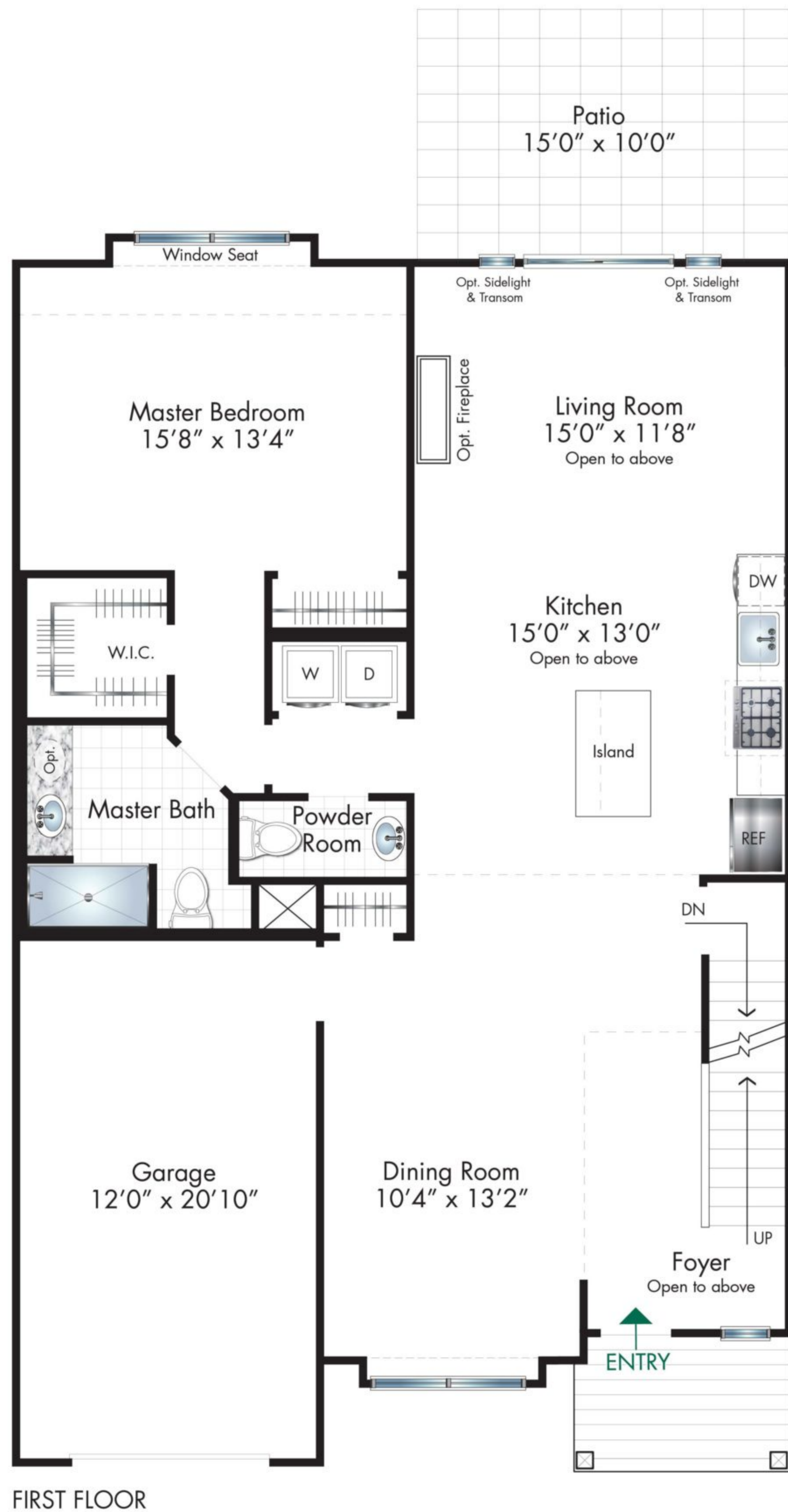
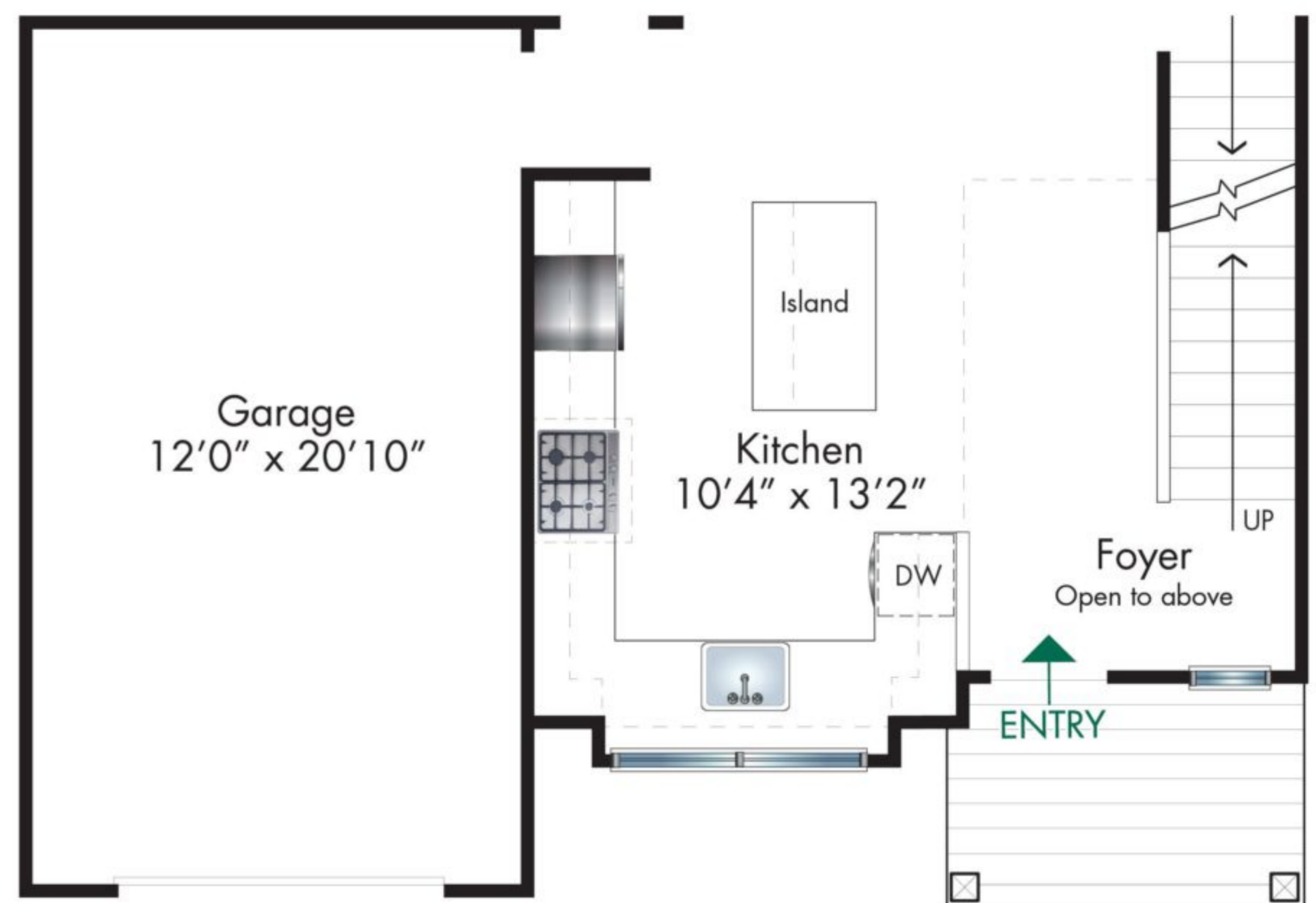


# The BAROLO TOWNHOME

2 Bedrooms • 2.5 Baths • Loft • Patio • Basement • Garage  
 Living Area 1,997 Sq.Ft. • Basement 1,070 Sq.Ft. • Garage 264 Sq.Ft.



SECOND FLOOR



OPTIONAL KITCHEN LAYOUT



All floor plans are artist renderings, conceptual only, may show optional features and are subject to change without notice. All dimensions, plans, window locations and sizes and elevations are approximate and subject to field variation. Layout may be reversed and kitchen layout may vary. Sponsor reserves the right to make plan, product, finish and style changes without prior notice or obligation.

1,070 Sq.Ft. Basement Included