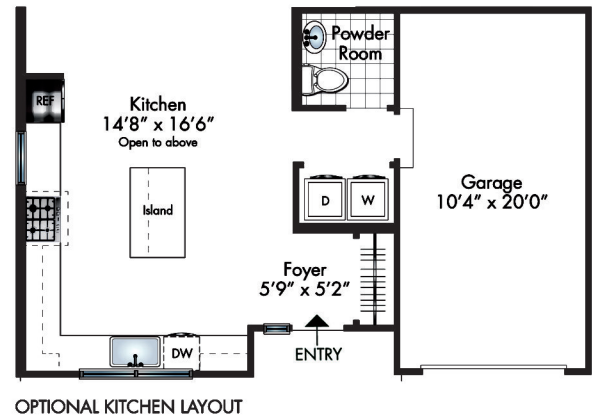
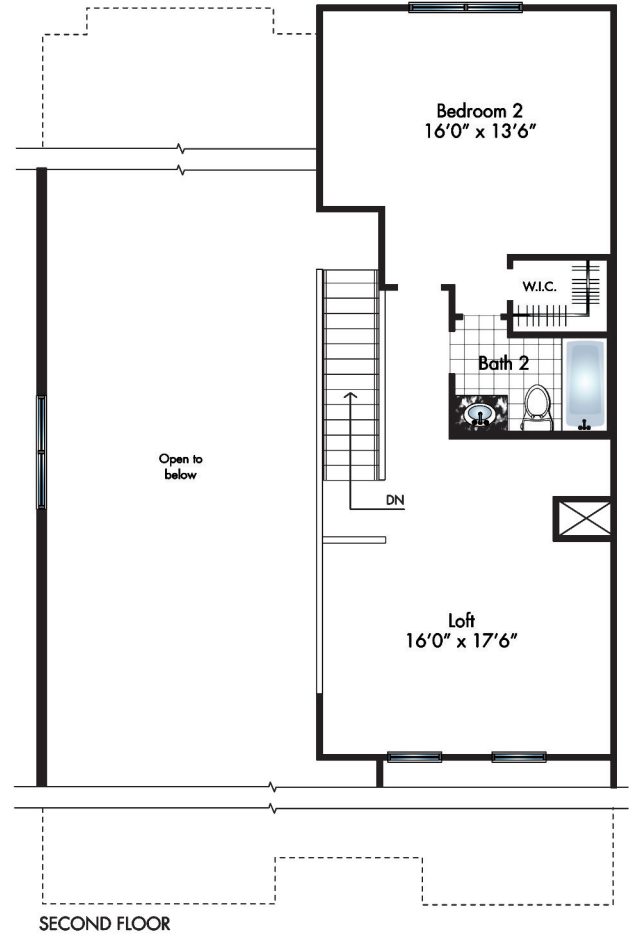
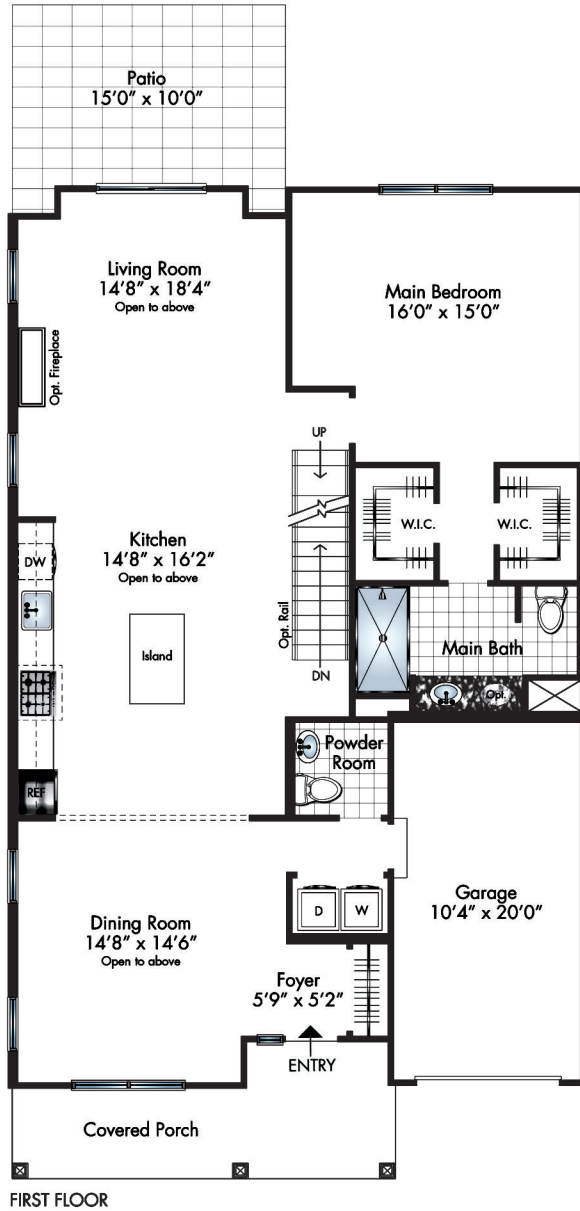


The MALBEC TOWNHOME (END)

2 Bedrooms • 2.5 Baths • Loft • Patio • Basement • Garage
 Living Area 1,982 Sq.Ft. • Basement 1,232 Sq.Ft. • Garage 218 Sq.Ft.



All floor plans are artist renderings, conceptual only, may show optional features and are subject to change without notice. All dimensions, plans, window locations and sizes and elevations are approximate and subject to field variation. Layout may be reversed and kitchen layout may vary. Sponsor reserves the right to make plan, product, finish and style changes without prior notice or obligation.

1,232 Sq.Ft. Basement Included